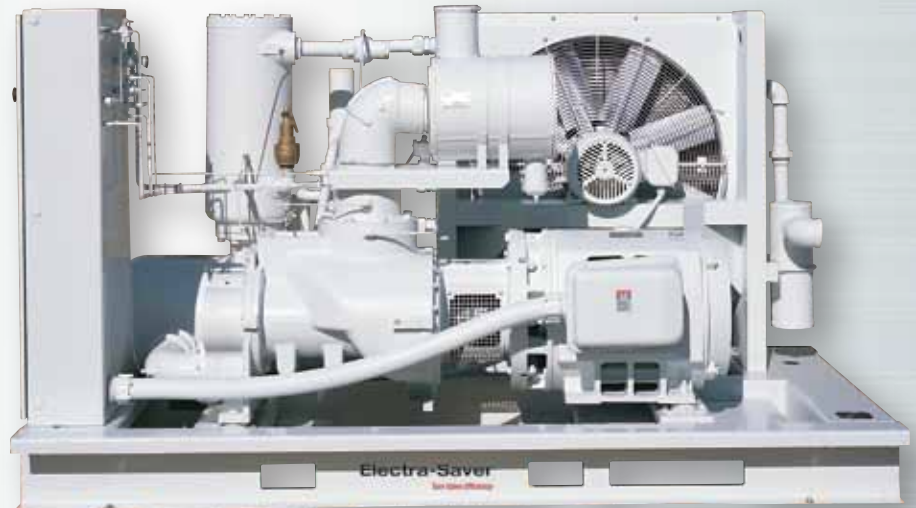


# Electra-Saver® Rotary Screw Air Compressors

125–200 HP, SAV 125/150/200  
Variable Displacement Control



#### Turn Valve Part Load Technology

- The patented Turn Valve is the most efficient part load capacity control system in the industry.
- Kypho™ rotor design, coupled with Turn Valve technology can reduce energy costs as much as 16%.
- Precision milled, robust, high strength ductile iron rotors ensure durability.

#### Direct Drive Non-Geared Airend

- Increased bearing life (L-10 life in excess of 100,000 hours) due to large tapered roller bearings.
- Permanent air end to motor connection via rigid flange connection for vibration-free operation.

#### Maintenance Reducing Design Features

- Simplified access to air/oil separator, requiring removal of only twelve bolts and no piping to change separator elements. This reduces maintenance time by 90%.
- Easy access to air filter mounted directly to the inlet valve.
- Spin-on ten micron full-flow oil filters ensure longer lubricant life and protection for all working parts.

#### Heavy Duty Inlet Air Filter

- Standard canister-type filter on Electra-Saver units; usually an option with other manufacturers.
- Removes 99.9% of airborne particulates five microns and larger.
- Extends lubricant life by almost 20%.

#### AirSmart™ Microprocessor Controller

- Most complete electronic control in its class with unsurpassed self-diagnostic, protective shutdown, service advisory and full text digital display capabilities.
- Built-in selectable automatic restart and optional sequencing (up to eight units) functions make the AirSmart™ the most versatile standard compressor control available.
- Large four-line LCD control display with capabilities of displaying information in up to eight languages.

**GD**  
**GARDNER DENVER**

*Experience Proven Results*

# Technical Data, Direct Drive

## SAV 125–200 HP

Motor power	Hz	Style	Model	Rated Pressure		Capacity at Rated Pressure*		Approximate Dimensions				Net weight		
				psig	bar	acfm	m <sup>3</sup> /min		Length	Width	Height		with Enclosure	Less Enclosure
125	60	SAV 125	EAQ	100	6.9	614	17.39	in	114	68	69	lb	5500	5200
				125	8.6	530	15.01							
				150	10.3	444	12.57							
125/93	50	SAV 125	EAQ	100	6.9	594	16.82	in	114	68	69	lb	5500	5200
				125	8.6	480	13.59							
				150	10.3	418	11.84							
150	60	SAV 150	EAQ	100	6.9	726	20.56	in	114	68	69	lb	5500	5200
				125	8.6	608	17.22							
				150	10.3	520	14.72							
150/112	50	SAV 150	EAQ	100	6.9	681	19.28	in	114	68	69	lb	5500	5200
				125	8.6	590	16.71							
				150	10.3	476	13.48							
200	60	SAV 200	EAQ	100	6.9	726	20.55	in	114	68	69	lb	5500	5200
				110	7.5	723	20.47							
				125	8.6	718	20.33							
				150	10.3	720	20.38							
200	60	SAV 200 DD	EAU-DD	100	6.9	974	27.58	in	114	68	69	lb	5500	5200
				125	8.6	832	23.56							

\* Capacity measured in accordance with CAGI/PNEUROOP acceptance test code PN2CPTC2.

\*\* Noise level measured in accordance with ISO 2151.

1. Full package performance with ICFM (m<sup>3</sup>/min) measured at the terminal discharge of the package in accordance with CAGI/PNEUROOP acceptance test code PN2CPTC2.

2. Dimensions shown are nominal for all unenclosed models and for quiet enclosed water cooled models. Width on all quiet enclosed air cooled models is 90" (2286 mm).

3. Weights shown are for air cooled models less shipping skid. Water cooled models weigh slightly less.

### Standard Equipment

- Automatic Turn Valve capacity control
- Direct drive, non-geared, D-flange mounted airend
- 460 volt, 3 phase, 60 HZ, 1800 RPM, 1.15 S.F., EISA "energy efficient" ODP drive motor, or 380/415 volt, 3 phase, 50 HZ, 1500/3000 RPM, 1.15 S.F., ODP D-flange drive, Star-Delta motor with standard 5-year warranty.
- Heavy duty, five micron, dry canister inlet air filter
- Airend and motor shafts coupled through a permanently aligned, resilient cushion-type flexible coupling
- Unitized airend-motor assembly mounted to the compressor base with all-angle, elastomer, vibration isolators
- Heavy duty, all welded steel base with fork lift slots
- ASME coded air/oil accumulator with Gardner Denver® Eliminator™ separator element
- Oil cooler/aftercooler:
  - Air cooled models—heavy duty radiator-type with thermally controlled, totally enclosed fan motor
  - Water cooled models—shell and tube-type heat exchanger

- Thermostatic oil mixing valve
- Package mounted moisture separator and trap
- Ten micron, full flow, oil filter
- Pressure relief valve
- Automatic blowdown valve through inlet filter
- Minimum discharge pressure/ check valve
- Stainless steel control line tubing
- Factory fill with AEON® 9000SP synthetic lubricant
- NEMA 4 electrical control enclosure includes Wye-Delta main motor starter, fan motor starter, control voltage transformer, ammeter, AirSmart, U.L. listed and CSA certified electrics

### AirSmart™ Features

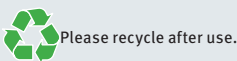
- Controller designed exclusively for Gardner Denver
- Microprocessor controlled
- Low voltage 24 VDC operation
- Informative control panel
  - 4 line X 20 character LCD Display
  - 4 Status LEDs for "at a glance" compressor status
  - 9 buttons for easy control and menu navigation
  - Wide selection of 8 language choices
- Sequence capable
- RS-232 Serial communications for local monitoring

- Ethernet communications for remote monitoring
- Compressor controls provide feature rich error handling
  - 29 different sources for advisories
  - 68 different sources for system shutdown
  - Advisory/shutdown history stored in non-volatile memory
    - Last 6 advisories
    - Last 6 shutdowns
  - Ease of maintenance
  - Maintenance information at your fingertips
  - Advisory and shutdown histories
  - Programmable distributor contact information
  - Part number identification of consumables
- Displays for hourmeter, loaded hours, total runtime, discharge air temperature, system/reservoir pressure and motor amps
- Advisory lamps, light yellow on diagram, displays service for air filter, change separator, oil and oil filter change, low/high temperature, sequencing communication error, and high motor amps
- Protective shutdown lamps, light red on diagram, displays high temperature, low oil pressure, main motor overload, fan motor overload,

- high pressure, change separator, choice of one field-selectable message: high vibration, phase relay, motor protector, low voltage
- Power interruption protection
- High speed electronic modulation control
- Thermally controlled fan motor on air cooled units
- Contacts for remote start/stop operation plus remote monitoring

### Optional Equipment

- Automatic water temperature regulator (on water cooled units)
- Magnetic water control valve (on water cooled units)
- Seacoast (air-cooled) or Saltwater (water-cooled) coolers
- Remote or remote elevated air cooled oil cooler and aftercooler
- Full acoustic enclosure with access doors
- Alternate voltages, TEFC and high efficiency motors
- Factory fill AEON® 6000FG Food Grade Lubricant
- Factory fill AEON® 9000TH High Temperature Lubricant
- Factory fill AEON® BIO Biodegradable Lubricant



# Gardner Denver®

www.GardnerDenverProducts.com

Gardner Denver, Inc. 1800 Gardner Expressway, Quincy, IL 62305  
www.contactgd.com/compressors  
866-440-6241